

65 YEARS: BUILDING A STRONGER, HEALTHIER COMMUNITY ONE FAMILY AT A TIME.



PLANNED PARENTHOOD OF HOUSTON AND SOUTHEAST TEXAS
ANNUAL REPORT
SEPTEMBER 1, 2000 - AUGUST 31, 2001

OUR VISION

WE SEEK A WORLD IN WHICH ALL CHILDREN ARE WANTED AND CARED FOR, ALL WOMEN AND MEN HAVE EQUAL RIGHTS AND DIGNITY, SEXUALITY IS EXPRESSED WITH HONESTY, EQUALITY AND RESPONSIBILITY, AND THE DECISION TO BEAR CHILDREN IS PRIVATE AND VOLUNTARY.



OUR MISSION

THE MISSION OF PLANNED PARENTHOOD OF HOUSTON AND SOUTHEAST TEXAS, INC. IS TO ENSURE THE RIGHT AND ABILITY OF ALL INDIVIDUALS TO MANAGE THEIR SEXUAL AND REPRODUCTIVE HEALTH BY PROVIDING HEALTH SERVICES, EDUCATION AND ADVOCACY.

Table of Contents

1	Message to the Community
2	Our Programs
5	Financials
8	Donors
15	Clinic Locations and Directors
16	2000-2001 Board of Directors
16	2000-2001 Senior Staff

MESSAGE TO THE COMMUNITY

"It is not just enough to look backward with pride, justified as that pride may be. We must look forward with hope and confidence, too. The real lesson of the past is that it shows us what can be done for the future."

Margaret Sanger

This past year marked the 65th Anniversary of PPHSET. We, and those who came before us, have seen much change during that time, some of which would make Margaret Sanger proud. We are justifiably proud of our accomplishments this past year!

■ In December, the University of Houston School of Social Work and its Center for Organizational Research and Effectiveness honored PPHSET with the CORE Organizational Excellence Award. This award recognizes the effectiveness of the improvements that have been made in customer service, internal communications, strategic planning and other areas that contribute to excellent organizational operations and performance.

■ PPHSET saw its third straight year of healthy financial performance in FY2000-2001.

■ We saw several legislative victories in the Texas Legislature, including the enactment of a contraceptive equity bill.

On June 8, 2001, we gathered to celebrate the 65th year of helping women, men and teens obtain quality reproductive healthcare and information and in advocating for reproductive rights and freedom. As more than 300 guests and elected officials joined our staff and volunteers for the celebration, rain

began to fall. Little did we know that this rainfall, also known as Tropical Storm Allison, was the start of an historic flood that would devastate tens of thousands of individuals, families and businesses. The impact of Tropical Storm Allison on our community's philanthropic efforts will be felt for some time.

When Margaret Sanger began the fight for women's reproductive rights, she could only hope that future generations would eventually emerge from what surely appeared a timeless battle. We are certainly much farther along than the America of the early 1900s. The struggle for reproductive rights for all individuals, however, continues in our local community and around the world. Our future generations are counting on us - we cannot let them down. With the continued support of our donors and volunteers, we will not let them down.

If our community is to become stronger and healthier, we must continue on our chosen path of action. Over the next three years we will increase access to our full range of services and programs, achieve financial growth and stability and lead more visibly with advocacy.

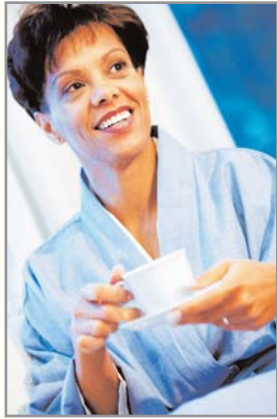
We are pleased to present the results of Fiscal Year 2001, our 65th Anniversary, to our supporters and friends; we urge you to stay involved and committed for the next 65 years.



The Reverend W. Stewart MacColl
Chair, Board of Directors



Peter J. Durkin
President and CEO



Medical Services

*Women, men and teens turned to Planned Parenthood for their reproductive health-care needs in close to **96,000** medical visits last year.*

Our programs and services are the foundation of our plan to build a stronger, healthier community one family at a time.

The professional staff of physicians, nurse practitioners, physician assistants and clinic assistants at PPHSET is dedicated to providing confidential, accessible birth control and reproductive health services in a welcoming and safe environment.

There are more than 10 million women living in Texas and more than 26 percent of them have no health care insurance. Texas ranks 49th in the nation.

Birth Control

Affordable, reliable contraception is crucial to decreasing the high rate of unintended pregnancy in the United States. Planned Parenthood supplies all FDA-approved options for birth control, including: condoms (female and male), spermicides, contraceptive injections, Norplant implants, birth control pills, diaphragms and intrauterine devices (IUD).

Each of our clinics offers emergency contraception, which can prevent pregnancy if taken within 72 hours of unprotected sex. Each year in the U.S., half of all pregnancies are unintended. Of these three million unintended pregnancies, half end in abortion. It is estimated that greater use of emergency contraception could cut the number of unintended pregnancies in half. EC will not work if a woman is already pregnant.

Well-Woman Exams

A visit to PPHSET may be the only medical care many women receive each year. Annual exams include a Pap test to detect cervical cancer, blood pressure check, heart and lung assessment, breast exam, pelvic exam and counseling and instruction on birth control options, as appropriate.

Screening and Treatment for Sexually Transmitted Infections

Fifteen million new cases of sexually transmitted infections (STIs) are reported in the U.S. each year. Planned Parenthood screens and treats women and men for STIs and educates clients on how to reduce their risk of future infection.

HIV Counseling and Testing

Planned Parenthood offers HIV counseling and testing. Counselors help clients understand HIV and the behaviors that put them at risk, and offer referrals to medical and social service providers if test results are positive.

Prenatal Care

Low-income women from the predominantly Hispanic Gulfton community turn to PPHSET's Southwest Clinic for prenatal care. A nurse practitioner and a doctor work with clients to ensure that both mother and baby enjoy a healthy pregnancy. All PPHSET clinics provide counseling on healthy pregnancy to clients who are preparing to have children. We discuss the need for regular visits with a physician, as well as healthy lifestyle and diet changes.

Mammography and Dysplasia Services

Low-income women between the ages of 50 and 65 have access to breast cancer screening through our monthly Mammogram Program. We also offer colposcopy to diagnose cervical abnormalities and early stage cervical cancer (dysplasia), as well as treatment for these conditions.

Midlife Services

Women dealing with menopause are faced with a new array of health and medical challenges. We offer hormone replacement therapy, suggestions for lifestyle changes and counseling to support women as they enter this new stage in their lives.

Abortion Services

Planned Parenthood responds to the needs of women by providing abortions through the first 20 weeks of pregnancy. Each client meets with a counselor who discusses all options and ensures that the woman is making her own informed decision about what is best for her at this time.

Female Sterilization and Vasectomy

Women and men who have completed their families come to PPHSET for permanent sterilization. Tubal ligation and vasectomy are highly effective procedures for clients who already have all the children they desire.



Education

Education empowers individuals to take control of their lives and to take responsibility for their actions. Planned Parenthood has always recognized the link between knowledge and health; we know that teens and adults must first have a solid understanding of their bodies and their sexuality before they can make responsible choices.

During 2001, we reached 11,107 women, men and teens in Houston and southeast Texas with information that promotes healthy sexuality and responsible choices. Through workshops, health fairs and our Resource Center, presentations were provided to 5,602 teens in public schools, 1,315 professionals, 447 college

students and 459 parents. We participated in 23 health fairs; sexuality and reproductive health training was provided to individuals from ten different agencies. Students were reached at ten college campuses, six religious institutions and six private schools.

PPHSET's holistic teen pregnancy prevention program, **Brighter Futures**, saw the very successful conclusion of a three-year study by the Children's Aid Society (Brighter Futures was one of 12 teen pregnancy prevention programs participating in the study). The study demonstrated that, among girls, the program significantly delayed the onset of sex, increased the use of condoms and other effective methods of contraception and reduced pregnancy and birth rates.

Brighter Horizons, a collaborative program in area middle schools, provided classroom instruction in parenting, sexual abuse and sexuality and provided a counselor to each school.

Pregnancy, Education and Parenting (PEP) continued its success in helping teen mothers at Houston's Jefferson Davis High School complete their education, avoid a second pregnancy and develop parenting skills.

In 2000-2001 PPHSET initiated the **Planned Parenthood Sex Education Team (PPHset)**, which was comprised of six Americorps youth. This creative group developed program performances featuring dance, music and drama to educate peers in 42 schools in Houston and southeast Texas.

Utilizing expertise gained from PPFA's Global Partners program, a multi-functional staff work group developed a program model for a new **Promotora** program. The program, conducted in partnership with Avance, will train nine women from Hispanic neighborhoods in Houston's East End about preventative care, birth control methods, healthy sexuality and advocacy. The promotoras will use this information to proactively educate other neighborhood women who are recent immigrants.

The **Institute for Sexual Health** continued to provide programming for professionals and parents throughout the Houston area on numerous reproductive health and sexuality issues.

Girls at Planned Parenthood (GaPP) helped girls aged 9-11 understand and enjoy the process of growing into puberty.

In Contrast...		
Change in teen birth rates per 1,000 girls aged 15-19, 1991-2000		
State	Change	Rank
Vermont	-38.5%	1
Alaska	-35.2%	2
California	-35.1%	3
Maine	-34.0%	4
Michigan	-33.6%	5
Alabama	-14.9%	46
Arizona	-14.4%	47
Arkansas	-14.2%	48
Nebraska	-12.3%	49
Texas	-12.3%	49
United States	-21.9%	N/A

Source: *The National Campaign to Prevent Teen Pregnancy*



Public Affairs

Public Affairs carries out Margaret Sanger's proud tradition of ensuring access for women and men to the full array of reproductive healthcare services. PPHSET's advocacy staff and volunteers work proactively in our clinics and communities to ensure that local, state and national legislators hear the voices of the families who rely on our medical and educational services. Our efforts encompass a variety of grassroots activities; their success depends on the commitment of our volunteers, donors, staff and clients.

On an Average Day in Texas (2000):

The population increased by 583 persons. There were 992 births (20 babies had no prenatal care and 56 babies were born to teenage mothers under age 18).

source: Texas Department of Health

Responsible Choices Action Network boasts nearly 8,000 advocates who send e-mails and faxes to members of Congress on issues relating to family planning, sexuality education and reproductive health care.

As members of the **Letter of the Month Club**, more than 1000 supporters write letters to their elected officials ten times a year. Recent topics included letters on Equity in Prescription Insurance and Contraceptive Coverage (EPICC), the Global Gag Rule and Family Planning State Empowerment Act.

Lobby Day occurs when the Texas Legislature is in session. In February 2001, 300 clients, volunteers, donors and staff traveled by bus to Austin where they met with more than 50 legislators from our service area to advocate for family planning and reproductive health care. This past legislative session saw two victories in the Texas Legislature - HB 2382 Contraceptive Equity Bill and SB 1156, which included a call for expanded Medicaid coverage for family planning.

Free Pap Day provides access for low-income women to a free Pap test at any Planned Parenthood clinic. Public affairs volunteers educate clients in the clinic waiting areas about family planning issues and provide an avenue for advocacy.

VOX (Voices for Planned Parenthood) is a nationwide program to educate young Americans about threats to reproductive health and freedom and mobilizes them to get involved. VOX groups organize public events to raise awareness about reproductive rights, educate young people at concerts about sexual health and mobilize advocates of reproductive freedom.

The **Clinic Advocacy Program** was created to empower clients to take action in support of the services they use and value. PPHSET has one of the strongest clinic advocacy programs in the U.S. with 5000 client members who have agreed to contact their legislators about important public policy issues affecting these services. A computer was recently installed in the waiting area of our Fannin clinic, allowing clients access to additional information on reproductive health and advocacy and the ability to sign up for our e-mail alert system.

Global Partners is the international public policy and service initiative of PPFA. Global Partners supports Planned Parenthood affiliates with a variety of tools and resources to educate and mobilize supporters, policy-makers, the media and diverse coalition partners about the global need for family planning.

PPHSET formed a partnership with the Mexican Family Planning Association (MEX-FAM) in Tampico, Mexico, in 2000. Our *Promotora* program is modeled after the Tampico program. During FY2001, we worked with Mexfam to further their skills in education, medical services, fund development and advocacy.

Partnerships between Planned Parenthood affiliates in the United States and international reproductive health organizations abroad have been formed since 1998 through the Global Partners program.

Research

With competition for patients and dollars at an all-time high and with technological advances in humanitarian research evolving at an ever more rapid pace, expanded participation in research is integral to our mission, our growth and our future success. Research-related revenues of Planned Parenthood of Houston and Southeast Texas have grown four-fold in recent years.

PPHSET has a long history of successful collaboration in research to advance reproductive health and technology dating back to the early 1970s. In the early 1990s, PPHSET participated in the clinical trials of medical abortion - mifepristone/misoprostol and methotrexate/misoprostol - and collaborated with the nationwide Consortium of Abortion Providers to expand availability of early abortion utilizing manual vacuum aspiration.

Our proximity to the Texas Medical Center affords PPHSET a unique opportunity to collaborate with world-renowned faculty and researchers from Baylor College of Medicine, Texas Women's University and The University of Texas Houston Health Science Center (College of Medicine and School of Public Health) on cutting edge studies of new technologies. This experience has allowed us to build a reputation as a first-rate clinical site. Our research partners include cutting edge pharmaceutical and biopharmaceutical companies and laboratories.

There is an integral relationship between PPHSET's provision of medical services and its participation in research projects to advance reproductive technology and health. Making more and better reproductive health options available and accessible to women and families helps create healthier families and helps ensure that every child is a wanted child. Participation in research that contributes to advances in reproductive technology is essential for PPHSET to accomplish and further its mission.

Financial & Client Information

STATEMENT OF SUPPORT, REVENUE AND EXPENSES

September 1, 2000 - August 31, 2001

Revenues:

Contributions	\$1,707,616
Patient Fees	\$5,871,516
Title XX and XIX	\$3,223,922
Grants	\$ 740,341
Investment Return	\$ (282,398)
Others	\$ 52,292
Total	\$11,313,289

Expenses:

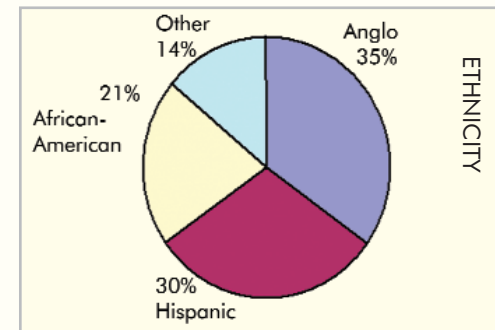
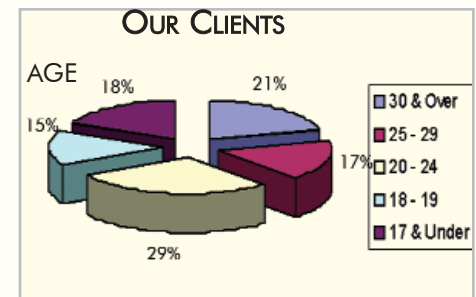
Patient Services	\$7,956,004
Community Services	\$ 813,923
Fundraising	\$ 366,361
Management and General	\$1,098,317
National Dues	\$ 99,531
Total	\$10,334,136

METHOD OF PAYMENT FOR FAMILY PLANNING SERVICES

Government Family Planning Funds	37%
Patient Fees	51%
Medicaid	4%
Grants	8%
Total	100%

MEDICAL SERVICES

Family Planning Visits	76,031
HIV Counseling & Testing	8,970
Abortion Procedures	6,551
Cervical & Breast Cancer Prevention Visits	1,602
Prenatal Visits	532
Male & Female Sterilization	59





Planned Parenthood was built on the concept of volunteerism and continues in that proud tradition today. It was a group of volunteers who in 1936 opened the doors to a small clinic that grew to become Planned Parenthood of Houston and Southeast Texas.

More than 900 volunteers provided a total of 9,600 hours of service to PPHSET during the 2001 fiscal year, which represented in-kind contributions valued at \$136,000.

Of the 6.3 million pregnancies in the U.S. in 1994, 48 percent were unintended.

Unintended pregnancy is most likely to occur among teenagers, unmarried women, black and Hispanic women and women with low incomes.

A birth is classified as unintended if the mother says that at the time of conception, she wanted to have the birth later or did not want more children.

Source: Alan Guttmacher Institute

Volunteers

Our **Advocacy** volunteers spent 3,550 hours educating elected officials with personal visits, letters, phone calls and e-mails on reproductive healthcare issues facing today's women, men and teens. Advocacy volunteers also worked tirelessly in the clinics, spending hours encouraging PPHSET clients to vote, become involved and have a more active voice in the public policy process.

Administrative Services volunteers provided 400 hours in office support in the areas of Development, Public Affairs, Education/Resource Center and Medical Services. General office support includes bulk mail projects, filing, copying, shredding, data-entry, research and office organization projects.

Our **Clinic** volunteers supported us with 3,500 hours of helpful work. These volunteers play a critical role in the daily operations of Planned Parenthood. Many act as client escorts by providing unobstructed entry to the clinic on days when protesters are present. Others serve as "handholders," providing support to clients during medical visits and procedures. These dedicated volunteers also provide clerical support by answering phones, scheduling appointments, preparing medical records, filing, shredding, labeling pill packs and assisting with client intake responsibilities.

Volunteers in the **Education Department** are essential members of our community outreach team. More than 750 hours were spent by volunteers representing us at various events, including community health fairs, festivals, concerts, agency fairs, parades, expos, and rallies. In addition, the PPHSET Speakers Bureau gives our volunteers an opportunity to address diverse groups of people about the services we provide, as well as to present programs for schools and community groups on sexuality related issues, pregnancy prevention, and sexually

transmitted diseases and infections. Other volunteers help staff the library and assist visitors in our resource center.

Development volunteers spent 1,400 hours assisting staff with various fundraising events, including the annual gala, pro-choice luncheon and tennis tournament. Responsibilities included serving on committees, soliciting auction items, addressing invitations and researching funding sources.

Volunteer Organizations

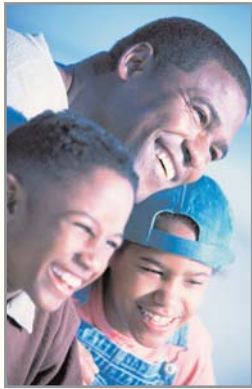
There are two membership organizations that our volunteers are encouraged to join:

The Board of Advocates

The Board of Advocates was developed to mobilize the experience, expertise and energy of its members to provide financial and volunteer support to PPHSET in the areas of direct service, advocacy, education and fundraising. Last year, more than 111 volunteers joined the Board of Advocates and contributed a total of \$8,800 to our general operating fund. Throughout the year, the Board of Advocates members host several informative, thoughtful programs about current developments in sexuality, public policy and health care.

Planned Parenthood Young Leaders (PPYL)

PPYL builds a new generation of supporters and advocates for Planned Parenthood of Houston and Southeast Texas. The group, which raises awareness of and appreciation for the agency and the services it provides to the community, boasts an active membership of 80, ranging in age from college students to "thirtysomethings." Throughout the year, PPYL sponsored many social, educational and volunteer events.



Development

The philosophical and financial support of dedicated individuals and foundations enable us to reach more of our community with medical services, educational programs and advocacy efforts. Each gift ensures women, men and teens will have access to vital reproductive health care and the means to choose when or whether to have a child. Donor support during Fiscal Year 2001 brought total fundraising to \$1,707,616, with more than half of our revenue coming directly from individual donations.

PPHSET is committed to managing your donation wisely. Regardless of the level of support, we value each gift and the commitment to reproductive health and freedom that it represents. Individuals may join the Planned Parenthood donor family through one or more of the following:

Annual Fund These unrestricted gifts support the affiliate's programs and services, allowing us to fulfill our objective to build a stronger, healthier community one family at a time. Every gift, no matter the size, is significant and greatly appreciated.

Events During FY2001, special events played a vital fundraising role. We celebrated our 65th Anniversary with many guests, elected officials and local entertainment at the Fannin location - just as the rains of Tropical Storm Allison began their deluge. The 2001 Roe v Wade Luncheon drew an overflow crowd of 1,250 people to hear speaker Frank McCourt, Pulitzer Prize-winning author of *Angela's Ashes*, and raised a record-setting \$266,000. The 2000 *See the Light* Gala dazzled the 425 attendees who gathered to honor Caroline Weiss Law and contributed more than \$386,000 to demonstrate their belief in PPHSET and its mission. These enlightening and entertaining occasions were wonderful friend raisers that enjoyed unprecedented success, thanks to the enthusiastic efforts of our tireless volunteers.

Cornerstone Club We recognize the many donors who support the Annual Fund with a gift of \$1,000 or more with special newsletters and CEO Updates as well as invitations to private events. These steadfast and generous supporters are the foundation of our success.

VIPs Our Very Involved Persons! make monthly contributions to PPHSET, creating a steady source of

income for our programs. VIPs give smaller gifts over a long period of time - an effort that really adds up.

20/20 Club These thoughtful donors have ensured that their values and beliefs will live on by planning gifts from their estates. Planning can be as simple as naming PPHSET in your will or creating a trust that provides income to you during your lifetime with an ultimate gift to PPHSET.

Corporate Matching Gifts Many companies and corporations match individual employee gifts to the charity of your choice.

Direct Response, E-Giving and More Direct response donors stay informed on the issues in reproductive healthcare through mailings and newsletters. E-donors take advantage of our Web site to make giving easy. Grocery shoppers at Kroger and Randall's have the option to earmark a portion of their grocery bills to Planned Parenthood.

Texas Ranks...

46th in the U.S. in the percentage of women receiving prenatal care in the first trimester.

48th in the U.S. in the percentage of women receiving life-saving tests to detect cervical cancer.

47th in the U.S. in the percentage of women who get regular mammograms to detect breast cancer.

46th in the U.S. in the percentage of women with sexually transmitted diseases - many of which go undetected and untreated resulting in infertility.



Donors

(September 1, 2000 - August 31, 2001)

We wish to express our deep appreciation to the foundations and individuals who support Planned Parenthood's mission. Your investment in Planned Parenthood helps provide essential reproductive health care and education to women and families in southeast Texas and assists us in our efforts to build a stronger, healthier community.

CORNERSTONE CLUB

A select group of contributors support the Annual Fund with a gift of \$1000 or more. You are invited to become a member of this distinguished group and enjoy special benefits and invitations to exclusive events.

Visionary Society

Anonymous

Founders Society

Melissa & Charles Davis

Elsa R. Kaim*

Katherine Kaim Kitchen &

Paul Kovach

Susan C. McAshan*

Presidents Society

Linda S. Auwers & Jim Jones

Eugenie M. &

David F. Douglass*

Isabel & Wallace Wilson

Vanguard Council

Edward H. Andrews Foundation

Anonymous

Hilary Bates &

Jerome L. Simon

Barbara & Richard Calfee*

Terry Hershey*

Mr. & Mrs. Roy M. Huffington

Elena & Kenneth Marks

Ginni & Richard Mithoff

Hanni S. Orton*

Planned Parenthood Partners

Sally & Monte Ackerman

Nancy & William Akers

Debbie & Todd Allen

Shirley D. &

Neal R. Amundson*

Anonymous

Mr. and Mrs. Robert J. Ardell*

Shanna Crawford Barnstone

Marion Barthelme & Jeff Fort

Lenore & William Burke

John H. Chamberlain*

T.D. Clark, Jr.

Nancy Couch

Virginia L. Courtney

Marsha Dodson

Dorflinger Foundation

Anne G. Forbes

Harriet & Joe Foster

The Honorable Kenneth

Franzheim II

Dorothy Goodykoontz

Gene Graham

Jean & Donald M. Gray*

Joyce Z. Greenberg

Peggy Heaton

Paula Hinton

Carrie & Howard Horne*

Terry Huffington &

Ralph Dittman

Dana & Bill Hurt

Esther B. Kane

Phyllis Kiel*

Mr. & Mrs. Albert T. Kister*

Polly & John T. LaDuc

Beth LaPenna

Allen D. Lay

Cheryl A. LeJune &

Mark L. Darby

Pam & Glenn Lowenstein

Sarah Jane & Clint Lueth*

John C. Malone

Isabelle Mayer

Linda & Howard McCollum

Mary T. McDowell

Michelle M. Miller &

Russell F. Krauss

Janet Mortenson &

Brooks Morgan

Karen & Dick Mullineaux*

Dr. Bonnie A. New

Linwood Newman

Jennifer Johnson Paden

Birgitta & Domenic Paino*

Imogen S. Papadopoulos*

Patricia Marie Pate*

Mr. & Mrs. George A. Peterkin, Jr.

Beverly & James Peters

Mr. & Mrs. Allen Reagan, Jr.*

Mrs. Jules F. Rosenbaum

Mark L. Roth*

Barbara Schachtel, PhD

Edna Schick

Marika Steele Schoolar

Gwyn W. Smith

Richard Stodder Charitable

Foundation

Carol A. Straus*

Nina M. Susman*

Suzanne Suter

Paul R. Tetreault & John Jeter

Dr. & Mrs. Peter K. Thompson

Natalie & Robert Thrall

David S. Toombs

Mary A. Van Kerrebrook

William W. Vann

Helen T. Vietor*

Mrs. C. Harold Wallace

* CHARTER MEMBER

THE 20/20 CLUB

The 20/20 Club recognizes those individuals who have demonstrated perfect vision for the future by naming Planned Parenthood of Houston and Southeast Texas as a beneficiary of a gift from their estate or in their will.

Aintre Antonoff
Susan Bealer
Allison E. Bell
Eugenia J. Daniels
Suzanne Decker
Lilli Elsas

Estate of Jack Bradley
Estate of Mary Cullinan Cravens
Estate of Juanita H. Dixon
Estate of Ruth & V.L. Harris
Estate of Carl J. Herman, Jr.
Estate of Kay A. Kent

Karen Ostrum George
Gloria L. Herman
Patsy Inman
Carolyn Jarufe
Mary Beth LaPenna
Jeannette D. Naman

Dr. Bonnie A. New
Hanni S. Orton
Pamela Prim
Cindy Slover Weatherly

VIP!s

Very important persons support Planned Parenthood of Houston and Southeast Texas through a monthly sustainer program.

Anonymous
Heather L. Barr
Randal B. Blackburn
Jeffri Botkin
Heather L. Brown
Cecile L. Calvert
Rosabel Chandler
Betty Chapman
Gabrielle Cosgriff
Kay B. Crooker
Sandhya & David Crossley
Cynthia Densmore
Susan & Philip F. Edwards
Lawrence J. Eisenhart
Carolyn Franklin

Marlene Friedman
Mary Frierson
Jennifer Gamez
Patty L. Gayman
Joyce Gilbert
Dr. & Mrs. Stanley R. Glasser
Ashley Goldberg
Alison de Lima Greene
Jacqueline M. Hatfield
Thomas E. Heig
Marilyn & John Henderson
Linda & Dan Herron
Pam Higgins
Barbara Howell
Carolyn Jarufe

David Johnston
Lois W. Kidd
Carolyn Killean
Teresa & John Langston
Janet Lewis
Rosina Lohrenz
Mr. & Mrs. John T. Lurcott
Cindy & Chris McDonald
Mr. & Mrs. Larry W. McGowan
Kim McGrew & Mark Clayton
Cynthia Meyers
Margaret G. Mirabal
Dr. David P. Mohle
Lucile J. Morgan
M. Anne Murphy

Joyce A. Nau
Jacey W. Norton
Lisa Pearson
Nancy Pittman
Heinz Puppe
Susie Quintanilla
Marie Rebstock
Kate Rhoad
Dr. & Mrs. John C. Ribble
Sandra Rice
Beth & Michael Schneider
Mr. & Mrs. Phil Shannahan
Teresa Simpson
Becky Skipper
Cathy Sommers

Ann S. Stevenson
Allison Stovall
Karen R. Strupp
Barbara M. Swartz
Michelle Sykes &
Karl Stembol
Mr. & Mrs. William W. Symes
Patricia A. Tillson
Mary B. Todd
David S. Toombs
Tina Tran
Susan & Robert Vermette
Juniel J. Worthington
Georgiana H. Zustovich

HONOR ROLL OF DONORS

We are grateful to the foundations and individuals who have acted on their belief that choosing whether and when to bear children is a basic human right and an expression of integrity, morality and dignity. With each gift, large or small, we have helped women and men live healthier, safer lives by providing the very best in medical services. We are inspired by the trust, commitment and generosity of our donors, and we are proud to include their names in this report, with their expressed permission.

\$100,000 & Above

Anonymous
The Brown Foundation, Inc.
The Clayton Fund, Inc.

\$50,000 - \$99,999

The Cullen Trust
for Health Care
The Estate of Juanita H. Dixon
The William Stamps
Farish Fund
Houston Endowment Inc.
T.L.L. Temple Foundation
Susan Vaughan Foundation

\$20,000 - \$49,000

Anonymous
George and Mary Josephine
Hamman Foundation
The Robert J. Kleberg, Jr. &
H.C. Kleberg Foundation

Susan C. McAshan*
Planned Parenthood
Federation of America
Rockwell Fund, Inc.
Louisa Stude Sarofim
Swalm Foundation

\$10,000 - \$19,000

Anonymous
Franci & Jim Crane
The Charles and Melissa Davis
Foundation*
J. A. Elkins, Jr.
Ray C. Fish Foundation
Houston Chronicle
The Burdine Johnson Foundation
Elsa R. Kaim*
Harris and Eliza Kempner Fund
Katherine Kaim Kitchen &
Paul Kovach*
Caroline Wiess Law

Dr. Maconda Brown O'Connor
The Powell Foundation
The Simmons Foundation
Isabel & Wallace S. Wilson*

\$5,000 - \$9,999

Nora & Bob Ackerley
Reece Chiles Altman
Anonymous
Carolyn & John Bookout
Estate of Jack C. Bradley
Maude L. Carter
Eugenie M. &
David F. Douglass*
Jan Kegley & Dr. Paul Fine
Melanie Gray & Mark Wawro
Gulf Coast Combined
Federal Campaign
Lucy Hadac* - Lucy, Ralph,
Raphael, John, Steve, Karen,
& Robin

Peggy Heaton*
Hobby Family Foundation
Terry Huffington &
Ralph Dittman*
The Lee and Joseph D.
Jamail Foundation
Lebeth C. Lammers
Elena & Kenneth Marks*
Sallie Morian & Michael Clark
Hanni S. Orton*
The Prentice Foundation, Inc.
State Employee
Charitable Campaign
Diana Strassmann &
Jeff Smisek
Joseph H. Thompson Fund
Travel Agency in the Park
\$1,000 - \$4,999
Nancy & Mark Abendshein
Sally & Monte Ackerman*

Nancy & William Akers*
Joan & Stanford Alexander
Debbie & Todd Allen*
Drs. Jamie & Steven Allen*
Nancy C. Allen
Shirley D. &
Neal R. Amundson*
Edward H. Andrews
Foundation*
Anonymous
Mr. & Mrs. Robert J. Ardell*
Maida M. Asofsky
Charlotte Hall Banham
Marion Barthelme & Jeff Fort*
Hilary Bates &
Jerome L. Simon*
Miss Harriet Bath
Allison E. Bell &
Dr. Robert L. Bell
George F. Bellows

* CORNERSTONE CLUB MEMBER

Muffet & Tommy Blake
Anne Bohann & Peter Brown
Richard Brown
Lois A. Boullion & Robert Long
Suzann & Travis Broesche
Robin & Richard L. Brooks
Joan K. Bruchas &
Philip Cowdin
Lenore & William N. Burke, Jr.*
Barbara & Richard Calfee*
Bettie Cartwright &
Colin Kennedy
John H. Chamberlain*
Chase
The Chase Manhattan
Foundation
Phyllis Childress &
Tony Abyad
Barbara Christley
Combined Municipal Campaign
T. D. Clark, Jr.*
Darla Comeaux
Jesse W. Couch
Nancy Couch*
Dr. & Mrs. E. Lillo Crain, Jr.
Susan Davidson &
Christina Dudinsley
Saundra Dean
Andrew Delaney Foundation
Sara Paschall Dodd
Marsha Moody Dodson*
The Dorflinger Foundation*
Brenda & John Duncan
Consuelo Duroc-Danner
Sara Jane Eads
Kathleen Ellis &
Jon Montgomery
Enron Foundation
Clayton & Sheldon Erikson
ExxonMobil
H. Fort Flowers Foundation, Inc.
Kelli M. Fondren
Anne G. Forbes*
Harriet & Joe Foster*
Susan Garwood &
George A. Peterkin, MD
Karen & Larry George
Louise & Larry Glenn
John Michael Gonzalez &
Richard J. Bauer

Dorothy Goodykoontz*
Lainie Gordon & David Minberg
Gene Graham*
Jean & Donald M. Gray*
Greater Houston
Women's Foundation
GRITS Foundation
Babette & Leon Hale
Patricia & John Harris
Kathy & Robin Harrison
Nancy Haywood
Barbara & Ernest Henley
Catherine & Frank Hevrdejs
Paula Hinton &
Steven Lawrence*
Huffington Foundation*
Dana & Bill Hurt*
Olive & Robert Jenney
Burdine Clayton Johnson
Ann Wier Jones
Leora Teicher Kahn
Esther B. Kane*
Lorena & Douglas Karpen, MD
Susan Booth Keeton
Wendy & Mavis Kelsey
Mr. & Mrs. I. H. Kempner III
Kathryn & Jim Ketelsen
Elizabeth W. Kidd
Phyllis Kiel*
Mr. & Mrs. Albert T. Kister*
Carla Knobloch
Polly & John T. LaDuc*
The Honorable &
Mrs. Robert Lanier
Mr. & Mrs. William V. Larkin
Max R. Lents
Lesley & Associates
Pam & Glenn Lowenstein
Philanthropic Fund of The
Houston Jewish Community
Foundation*
Sarah Jane & Clint Lueth*
Vickie & Phil MacNaughton
John C. Malone*
Frances & Peter Marzio
Andy & Dave Matthiesen
Isabelle Mayer*
Jacqueline G. McCauley
Linda & Howard McCollum*
Leah Lynch McFadden

The Meinig Family Foundation
Ginni & Richard Mithoff
Irene Moiel
Laurie Morian
Muffie Moroney
Janet Mortenson &
Brooks Morgan*
Karen & Dick Mullineaux*
Bobbie Nau
Bonnie A. New*
Denman Newman Foundation*
North Harris County Branch of
the American Association of
University Women
Jane Dale Owen
Jennifer Johnson Paden*
Ramona L. Paetzold
Imogen S. Papadopoulos*
Patricia Marie Pate*
Carrin Patman
Mr. & Mrs. George A.
Peterkin, Jr.*
Mr. & Mrs. James D. Peters*
Pfizer, Inc.
Janis Pinnelli
Anne Pratt
Mr. & Mrs. Edward Randall III
Fairfax & Risher Randall
Randalls Good Neighbor
Program
Mr. & Mrs. Allen Reagan, Jr.*
Grace B. Reed
Mrs. Jules F. Rosenbaum*
Lou & Buddy Rosenfeld, MD
Mark Roth*
Barbara Schachtel, PhD*
Edna E. Schick*
Marika Steele Schoolar
Vanessa & Perry Sendukas
Karen Shouse
Hinda & Barry Simon
Barbara S. Sklar
Mr. & Mrs. Frank Smith, MD*
Smyser Kaplan & Veselka, LLP
Karen Sobotka
Lois F. Stark
Richard Stodder
Charitable Foundation*
Carol A Straus*
Ellen & Stephen Susman

Nina M. Susman*
Susman Godfrey, LLP
Suzanne Suter*
Colleen Sweeney &
Douglas W. Miller
Paul R. Tetreault & John Jeter*
Dr. & Mrs. Peter K. Thompson*
Natalie & Robert Thrall*
Eleanor & James Tinsley
Karen Twitchell & Kirk Heyne
Sarah & Duncan Underwood
Mary A. Van Kerrebrook*
William W. Vann
Weil, Gotshal & Manges LLP
Mrs. John L. Welsh, Jr.
Kathy Wetmore
Andrea & Bill White
Beth Whitted &
Peter M. Rodgers
Mr. & Mrs. Benjamin Wilcox
Doreen J. Wise
Sharon Perry Wise
Barbara Woolhandler
Lynn Wyatt
Amy Young Shumaker &
Charles Shumaker
Susan B. & Austin Young

\$500 - \$999

Donna & Igor Alexander
Julie & Andrew Alexander
Andrew Delaney Foundation
Anonymous
Madeleine G. Appel
Karen A. Barrett
Norman Beal
Margie & Arthur Beaudet
Evelyn M. Bedard
Nancy & Leonard Berry
Cindi Blakely
Angela Blanchard
Ruth Brodsky
Chris Bryan & Trey Peacock
Karen Bryant
Susan & Rob Bushman
Elaine Arden Cali
Rikki S. Canelstein
Gracie Cavnar
Mr. & Mrs. Thomas Cleary
Suzanne C. Cole

Bebe & Joseph Cooper
Janelle & Lawrence Daniel
Angela DeSilva &
Michael DeRosa
Peter J. Durkin
Joan Ehrlich
Gwen Essinger
Cherryll & Bud Frick
Mary Frierson
Dr. Georgia Gatoura Foulard &
Mike Foulard
Sue Geller
Lila Gene George
John Grabowski
Jan & Chilton Greer
Jane Gregory
Colleen Hagen &
Michael W. Stavinoha
The Herman Family Fund
Dr. & Mrs. B. T. Hollins
Marian & William Hyman
Margaret Kallsen
Nina & David Karohl
Cele & Sam Keeper
Julane H. Knobil
Richard Konrad
Kroger Share Card
Willy Fred Kuehn
Kathleen & Randall Lake
Nanci & John Lamar
Priscilla Freeman Larson
Allen D. Lay
Laverne & Jack Lee
Alison & Herman Libshitz, MD
Sean Lisse
June & John Long
The Reverends Jane &
W. Stewart MacColl
Gaye McCullough
Nancy McGregor & Neal Manne
Barbara & Dr. Steven Meltzer
Anne C. Mendelsohn
Sherry & Gerald Merfish
Craig W. Miller
Mr. & Mrs. Michael J. Morgan
Kirsten Murphy & Cyrus Marter
Rufi & Raj Natarajan
Christi L. Nicolay &
Jay Schoenike
Evelyn Nolen

Margaret Norris, PhD
Blanca O'Leary
Edward Oppenheimer
Birgitta & Domenic Paino*
Sara Beth Peacock
Jim M. Perdue
Nancy Pittman
Edwina Popek
Jacquelyn & Joel Powers
Heinz W. Puppe
Mr. & Mrs. William J. Rafferty
Carolyn W. Payne &
John A. Rathmell
Mr. & Mrs. Hershel Rich
Nell Richardson &
Sidney Buchanan
Pauline M. Ridyad
Jeannette &
William Roman, Jr., MD
Sage Associates, Inc.
The Samuels Foundation of the
Endowment Fund of the Jewish
Community of Houston
Laura A. & Albert E. Singleton
Dr. Cheves M. Smythe
Helen Spector
Lisa E. Stone & Scott B. Cantor
Allison Stovall
Bettiruth & Adolph Susholtz
Patricia Thessen
David Toombs*
Sue M. Tucker
Susan Underwood
Mr. & Mrs. Edward B. Walker III
Markey Ford Weaver
Abe & Rae Weingarten
Dr. & Mrs. Rodger Winn

\$250 - \$499

Mrs. W. Kendall Adam
Mary T. Alderson
Frank P. Allen
Yolanda Alvarado
American General Corporation
Mr. & Mrs. William J.
Anderson Jr.
Aintre Antonoff
Carolyn & James Armogida
Laurel & Jack Babcock
Mr. & Mrs. Paul T. Bail

Mary Basden
Hagan Bayley & Orit Braha
Priscilla & Ludy Benjamin
Alice May & Don Berthelsen
Norma Besch
Dr. Gloria C. Biles
Edwin J. Blythe, Jr.
Heidemarie & Harold Boas
Jane & Daniel Bornstein, MD
Sally Ann Bosse
John P. Bowman
BP Amoco Foundation
Frances & Franz Brotzen
Amy Broussard
Kathy & Donald Brown
Judy & Tom Brownlie
Ethelene Bucy
Robin L. Bullington, PhD
Anne H. Bushman
Dr. James J. Butler
Katherine Butler
Nada Chandler
Janet F. Clark
Helen Cohen
Dr. William Z. & Mary M. Cohen
Julie Cohn Connor &
John Connor
Jane & Dean Corrigan
Sumana Datta
Renee S. Davis
Victoria DeRose
Mr. & Mrs. Wayne E. Derrick
Deborah Detering
Edith C. Diebel
Irene W. Erion
Dr. Arthur M. & Gail Faris
Kay & Sam Feldt
Relda Finger-Hoffer
Judith Groudine Finkel
Helen A. Fisher
Berthica Fitzsimons
Ruth E. Flournoy
Dr. & Mrs. Robert Freedman
Nancy Friedman
Gem Insurance
Joan Golding
Anne P. & Donald M. Graubart
Philanthropic Fund
Sandra Gray
Andrea Greer & Allen Hill

James Groves
Marilyn & Dick Gullede
Christianne Hagemann
Drs. Asha & Karim Haji
Jenya Harrison
Carey Brandfield Harvey &
Dr. Gregory Harvey, MD
Joyce Haufrect
Susan & Robert Hawkins
Virginia & Ben Henry
Paula E. Hitchcock
Lee M. Huber
Madeleine C. Hussey
Mrs. J.C. Hutcheson III
Patsy Inman
Dr. Dan Jackson
Belle Johnson
Mary Ellen & Richard Kirby
Candy Kyle
Helen W. Lane
Mr. & Mrs. Robert Lebow
Mary C. Lewis
Barbara & Larry Lipton
Marley Lott
Jackie M. Lovell
Rita Lucido
Grant Martin
Billie Saiet Mason
Layne & Chip Mason
Kirby & Scott McCool
Bridget McEvoy
Sally & Allen McGee
Joan M. McKirachan
Rose Ann Medlin & William Joor
Diane Jones Meier
Dr. B. Christoph Meyer
David W. Moles
Alfred Molison
Florence M. Monroe, PhD
Marjorie Moore
Suzanne K. & S. I. Morris
Louise & Gary Moss
Holly L. Musick
Nancy L. Niemann
Linwood Olson
Steve Ortman
Glenda G. Owen &
Kevin DuBose
Linda S. Popkin-Paine
Collyn Peddie

Francey Hawkins Pengra
Clint & Judy Phillips
Leslie A. Poole &
John Alexander Davis
Susie Quintanilla
Kathryn L. E. Rabinow
Leigh & Clinton Rappole
Beverly & Howard Robinson
Mr. & Mrs. Rocky Robinson
Cathryn L. Rodd
Jane & Elihu Root
JoAnn & Leonard Rosenberg
Mary Ann Ryerson
Betsy & Ed Schreiber
Dianne & Seth Sharr
Deborah Siegele & James Hu
Terry S. Silvers
Ed Smith
Pamela R. Smith
Susan & Henri Soussan
George W. Strong
Ruth & Harry Suggs
Gary Teixeira
W. T. Thagard III
Bette & Ralph Thomas
Mary Lynn Thompson
Thanh Trinh
Unitarian Universalist Fellowship
Gayle & Chris Van Brummen
Chaja Verveer
Natalie & Dalibor Vuckovic
Julia Wallace
Kristine & Stephen Wallace
Margaret & Gregory Weeter
Gretchen E. Weis
Jennifer & George Welch
Richard W. Wharton
Katherine White &
Simon Clemett
Ann & Michael Wilde
Gisela & Larry Wuench
Amber & Byron York
Katherine & Mark Yzaguirre
Mr. & Mrs. Harry A. Zuber

\$100 - \$249

Frances Janus Aaronson
Edith & Steve Abbey
Jeffrey S. Abrams
Patricia Colbert Adamik

Betty Adkins
Nancy & Paul Aldrich
Geraldine Allen
Alpha Kappa Alpha Sorority, Inc.
Letitia T. Alston
Patricia & Thomas Altman
Susan Altschuler
Dr. Paula Amaon
Nancy Amato &
Lawrence Rauchwerger
Alberta & James Anderson
Dorothy K. Anderson
Ira Anderson
Molly Anderson
Anonymous
Natalye L. Appel
Kathi & Ken Appelt
Carol Arce
Sare R. Aresty
Marie S. Ashby
H.G. Ave Lallemand
Mariame C. Aviles, MD
Beth & Gary Ayers
Diana Ayers
Barbara Conway Bailey
Dr. David T. Bailey
Catherine L. Baker
Lisa R. Balick, PhD
Diana K. Ball
Carol Ballard
Cindy Bandemer
Polly & Michael Barlow
Eileen Barrett
Wilma Barrett
Kay Read Bartle
Carol J. Bartlett
Karen A. Baughn
Dr. Roger A. Beaumont
Jean M. Beaver
Richard L. Bell
Rosemary H. Benning
Nancy T. Beren
Mrs. Robert R. Berg
Gertraude & John Bergland
Marsha Berryman
Sudha A. Bidani, MD
Carol & Douglas Biggs
Carrie Birdwell
Jacqueline Birkel
Lynette Bishop

Mollye R. Blackburn
Julia Blackwelder
Brenda Blair
K. Suzanne Blake
Leslie Blanton
Jody Blazek
Blieden, Foerster &
Company, CPAs
Sandra J. Block
Paul A. Boatright
Evelyn Boatwright
Nancy Bolduc
Kappner & Read Boles
Eugenia A. Bopp
Edward Bornet
Stacey Bourland
Berry Bowen
Billye J. Bowman
Elizabeth Boyce
Marcia Boyd
Mary Ellen Brennan
Marianna Brewster
Ann B. Brinkerhoff
Skip & H. L. Britton
Joan Brochstein
Judith H. & Stephen G. Brown
Laurel & Dennis Brown
Leslie Brown
Jane & Nelson Bruns
Carole Bryan
Peggy C. Buchanan
Sharrie Buck
Kathryn Buford
Lynn Buquo
Peggy & Mark Burck
Celia Burgower
Bette Burkett
Alison Smith
Cynthia A. Burkitt
Roberta Burroughs
Ross Bush
Ann Butler
Ann & Delmar Cain
Nell Calaway
Janet P. Caldwell
Debra Calkins
Emily Callier
Carol Camacho
Kathleen Cambor

Alison Cameron
Bruce Campaign
Jane M. Campbell
Cam & Rod Canion
Roxi Cargill
Julia & Max Carman
Mary & Tim Carney
Barbara Carroll
Janet T. Carter
Melanie & John Carter
Helen Cassidy
Kristi S. Cassin
Rebecca Catlin
Claire Caudill
Penny Cerling
Shine Chang
Eloise Charles
Maggie & Gene Charleton
Laura Chisholm
Laurie Chow
Virginia A. Clark
Ruth & Abraham Clearfield
Charlotte H. Coffelt
Betty & Paul Coffman
Ellen Cohen
Kathryn Coleman
Anthony Collins
Mary Colombo
Sandy Colt
Katharine Comstock
Jane Close Conoley
Donna R. Copeland, PhD
John W. Corbell
Jane Corboy
M. A. Correll
Sarah Cortez
Johnelle M. Cortner
Yvonne & John Cosgrove
Mr. & Mrs. Christopher S.
Cowles
Catherine Craddock
Mrs. Samuel S. Crocker
Sylvia & Ronald Crossland
Angela Crowe
Barbara Cummins
Suzanne Cutherell
Vivian Cyprus
Lucille E. Dabney
Ann Danforth

Anitra L. Daniel
Lynda Daniel
Henry A. Davidson
Anneliese Davis
Constance Davis
Donnie & Robert Davis
Neva C. Dawson
Patricia L. Day
Leslie de la Mora
June Deadrick
R. David Decker, Jr.
Judi & Ansel Dekle
Jeanne & John Delaney
Debra DePena &
Michael Theberge
Roberta M. Diddel, PhD
Barbara Dillingham &
Barry Moore
Dr. Thomas Doneker
Cindy Bishop Donnelly
Martha G. Dougherty
Frieda & Melvin Dow
Philanthropic Fund of the
Houston Jewish Community
Foundation
Clare Doyle
Nancy Otis Doyle
Debra Dreyfus
Robert Duffield
Joanne C. Duke
Mr. & Mrs. Paul A. Dunn
William T. Durkin
Runabir Dutt
Tamara & Pat Dyer
Judith T. Earle
Rose Eder & Terry Anderson
Barbara Kernighan Edgerton
Sally Edmundson
Mr. & Mrs. Frank G. Eidman
Sylvia Eisele
Barbara Meltzer Elk
Jennifer Elkins
Dr. & Mrs. Jerry Elledge
Lilli Elsas
Jennifer & James Elskes
V.J. Engerran
Helen Estabrook
Mr. & Mrs. C. Cameron Evans
Cynthia Evans &

Jonathan A. Powell
David Evans
Donna Evans
Mr. & Mrs. Joe Evans
Susanne Evans
Phyllis & Davis A. Fahlquist
Judith Feigin
April Field
Francis M. Fielder, Jr.
Mary Anne Fields
Mr. & Mrs. Jerry E. Finger
Louise Fischman
Priscilla F. Fish
Pat Fisher
David Fitzgerald
Anne Flamm
Marian Fleming
Cynthia Foley
Carmen Forbes
Barbara Robins Friedman
John W. Frierson
Janet Frost
Norma F. Funkhouser
Sue & Charles Futrell
Ella Jean Galbraith
Nora Jean Ganslen
Rachel Garcia
Kathryn Vardeman Garner
Sally Garwood
Mary Jane & Wilbur Gay
Antje Gee
Cynthia Geoghegan
Pat Georg
Elizabeth Gerson
Rhonda Gerson
Carolyn L. Gibbs
Ann Gladney Gibson
Elizabeth Gillis
D-Ann Gilmore
Elizabeth B. Glenn
Pam Glosserman
Sandy Godfrey
Gwendolyn Goffe
Lilly Golden
Lynn Goldstein
Gayle Goodman
Keith E. Gott
Helene Gould
Cynthia E. Grant

Karen Graul
Mr. & Mrs. David M. Green
Janet Greene
Robert T. Greenstein
Susan S. Greenwade
Nonya Grenader
Ellen Elkins Grimes
Nancy L. Grogan
Janet & Kenneth Groue
Mr. & Mrs. William H.
Guggolz, Jr.
Trudy & W. F. Guinee
Melinda C. Hackethorn
Elizabeth & Rick Hagens
Kathy Hall & Herman Dobbs
Robert C. Hamilton
Stanley Handel
John T. Hannah
Mary Margaret Hansen
Tim Hansen
Barbara Parker Hardy
Frances Harmon
Suzanne E. Harrill
Veronica & David Hart
Elizabeth Hawkins
Mrs. William D. Hawkins
Trish Haynes
John N. Hays
Mary Henderson
Marilyn Henderson
Calista S. Herbert
Dennis Herlong
Carol A. Hermes
Peggy & David Hester
Ann & Greg Heuberger
Lynn Couch Higgins
Lydia Caffery Hilliard
Melody Holdren
Robin L. Holland
Paula R. Holton
Susan E. Hoover
Katherine Horrigan
Houston Teleservice
Center's Unit 2 & Flower
and Gift Committee
Ellen Howard
Lisa Hubbard
Mr. & Mrs. C.M. Hudspeth
Sheila Hull

Annie Irigoyen
Robert C. Ittner
Ivy, Crews & Elliott, PC
Patricia A. Jacobs
Sandra G. Jackson
Jeremy Jameson
Mr. & Mrs. Donald H. Jaspers
Mr. & Mrs. R.R. Jenkins
Jill Jewett
Ann Kimball Johnson
Johnson & Johnson
Family of Companies
Linda J. Johnson
Linda Lee & Art Johnson
Lynne B. Johnson
Meredith Johnson
Raleigh W. Johnson, Jr.
Sis Johnson
Lori D. Johnston
Elouise A. Jones
Josie & Michael Jones
Laura Jones
Marilyn Jones
Margaret J. Jordan
Patricia D. Journey
Mr. & Mrs. Roger Judson
Cindy Kahle
Joan Kaplan
Judy Karty Kaplan
Mr. & Mrs. Marvin Kaplan
Paula Karfunkle
Ann Kaufman
Karen S. Kaufman
Mr. & Mrs. Andrew H. Kean, Jr.
Carolyn Frost Keenan
N.R. Kehoe
Ann M. Kellett
Elizabeth A. Kelly
Ann H. Kelsey
Susan Kennedy
Suzanne H. Kerr
Barbara L. Keyfitz &
Martin Golubitsky
Mimi Kilgore
Dianne & John Killough
M. Jo Kines
Mary E. King
Kate Kirkland
Donna & Ron Kleist

Martha Kleymeyer
Margaret K. Klineberg
Marilyn K. Knight
Paula Knudson
Sibley Kopmeier
Nancy Kornegay
Eileen Kovit
Nancy & Ken Kral
Jan & Arnold Krammer
Susan Krauter & Henry Venable
Sarah Krenzke
Elisabeth Krupa
Kay Kubelka
Sandra & Gordon Kuehl
Mitzi Kuroda
Eileen & William Kuvlesky
Suzanne Labarthe
Mr. & Mrs. Andrew W. Ladner
Sandra S. Lamborn
Paola Lancione
Mary Lou & Bruce Laubach
Carolyn Leatherwood
Robert Leech
Michael J. Lehman
Ann Leifeste & Bruce Arnett
Elizabeth Gray Lemon
Nancy Lerner
Candace & Bob Leslie
Louise Levien & Robert G. Eby
Virginia Lew
Anne Lewis
Linda & Phil Lewis
Diann L. Lewter
Vicki Lilly-Tallman & Curtis Tall
Larissa Ann Lindsay
Karen Linville
Cathy Livingston
Patti & Andy LiWang
Eva J. Loeb
Sharon A. Loeffler
Sheila Loewenstern
Eric Lombardi
Sara Longley
Penelope B. Loughhead
Sandra Louvet
Kristin Lucas
Jill Lueders
Joan H. Lyons
Barbara Mackey

Elizabeth S. Mackin
Audrey MacLean
Diana Mahan
Ann D. Mahoney
Corky Maltz
Nancy Manderson
Zein Mangalji
Beverly Manne
Josephine T. Hinds
Phyllis B. Margolin
Nona & Richard Marks
Mary Ellen Marshall
Ana M. Yanes Martin
Patricia A. Martin
Ann N. Mason
Steve Matsumoto
Linda K. May
Lauralynn Mayfield
Dr. Julia Wolf Mazow
Julie E. McCashin
James McCormick
Molly & Bruce McCormick
Robin McCorquodale
Carole McCotter
Patricia McCracken
Aimee McCrory
Mr. & Mrs. William H. McDugald
Donna B. McFall
Phyllis B. McFarland
Betty Lynn McHam
Christine McKinney
Dorothy McLemore
Courtenay McMillan
Dabney Cabbage Meaux
Gudrun Wallgren Merrill
Mary K. Merriman
Judy Meyer
James Patrick Miculka
Karen M. Miles
Catherine Miller
Doug Miller
Jan Z. Miller
Katherine Miller
Samuel J. Miller
Susan Miller & Tom Dunlap
Thomas E. Miller
Leslye Mize, PhD
Beatrice Mladenka-Fowler
Fogarty Klein Monroe

Elizabeth Ashe Montgomery
Geri & Don Moore
Jack Moore, MD
Nancy Powell Moore
Nancy S. Mora
JP Morgan Private Bank
Walter Morgan
Judy Kay Morgan
Dr. Martha L. Morse
Jane G. Moser
Diane Mosier
Marlene Moskowitz
Jane E. Mulholland
Virginia Muller &
Timothy Daponte
Maureen Mulrooney
Lynn L. Mumby
Larry Murdock
Linda L. Murphy
Karol & Daniel Musher
Betty Gordon Naegeli
John Nanninga
Susan J. Nelson
Kathryn A. Nemeck
Susan Nenney
Lisa Keeper Neuhaus
Peggy & Joe Neuhaus
Joyce Nies & Peter Witt
Marcia Noebels
Hope Annette Nordmeyer
Dr. Luceil North
Barbara A. O'Donnell
Sally O'Malley
Chris O'Neill
Oracle Corporation
Ana Goldston Osborn
Gardner & Bill Osborn
Karen Oshman
DeeDee Ostfeld
Statira J. Overstreet
Anne Owen
Betty R. Owens
Elizabeth Austin Page
Dena Palermo
Elizabeth A. Pannill
Councilmember Annise Parker
Marjorie & Sandy Parkerson
Linda & Paul Parrish
Richard R. Paseman

Lois A. Pate
Mary Ellen & David Pate
Karen Patrinely
Emily Pavlovic
Bernadette Payne
Gail S. Payne
Susie Peake
Corinne Pearson &
Thomas E. Krisa
Della Pearson
Louise Pearson
Betty Pecore
Kim Tran Pedigo
Liz Pennock
Cris Perez & Nicolas Kanellos
Shirley M. Perry
Brenda Peters
Linda W. Peterson
Mr. & Mrs. Larry Petershagen
Joe Peterson
Sara M. Peterson
Jean Pettitt
Susan & Doug Phillips
Betsy Phillips
Alan Philoon
Carla Piedrahita
Jenifer Pipkin
H. Russell Pitman
Mary Jane Pizzitola
Dr. Sharon E. Plon
Margaret & Charles Plum
Mrs. J. Holland Porter
Jan Potts
Shelly Power
Janet & Jeff Pozmantier
Elaine Proler
C. Russell Pryor, DVM
Doris Pruck
Mary Jazyk Puckett
Rosamond Quay
Deborah & Philip Rabinowitz
Lynette Rauch
Marsha Recknagel
Ellen & David Red
Reagan S. Redman
Clare Reid
Pamela L. Reiland
Maxine Reingold
Katherine Reynolds

Dr. Steven L. Reynolds
Barbara E. Richardson
Glenda Ridens
Catherine M. Rieser &
John M. May
Gregor H. Riesser, PhD
Jenni Ritchie
Barbara F. Rodes
Kathryn & David Rodwell
Mr. & Mrs. James C. Roe
Melanie L. Rogers
Peggy J. Rogers, PhD
Carolyn Rose &
John McEachran
Milton D. Rosenau, Jr.
Barbara Rosenfeld
Debbie Rothschild
Linda Rubenfeld
Sally & Bill Russ
John S. Russell
Mark Russell
Sandra D. Russell
Julie Sakowski
Mr. & Mrs. James L. Salners
Katie Sammons
Fran & Larry Sanders
Dyann Santos
Margaret Sass
Priscilla Saunders
Jan Schmieder
Tory Schmitz
Marjorie & Al Schultz
Barbara Schwartz
Sue & Andrew Schwartz
Seabury & Smith
Phyllis L. Segal
Sandy & Allen Segal
Henry C. Seidl
Dr. Dan K. Seilheimer
Bebe C. Selig
Mallory Shaddix
Molly & Harry Shafer
Susan Shaffer
Sandra Lee Shafto
Barbara Sharf & Marlynn May
Nancy A. Sharp
Mrs. Robert L. Sharp, Jr.
Marilyn Shaw
Linda Shead
Dr. Malcolm Sher
Jessica Shively

Carrie Shoemake
Carey C. Shuart
Zella Silverman
Elizabeth & David Singleton
Suzanne M. Skie-Azizi
Dr. & Mrs. J. E. Slater
Agnes L. Smith
Carol Smith
Ellen Smith
Dr. & Mrs. Joe Smith
Patricia Smith
Paul N. Smith
Olga Y. Soliz
Janet C. & James E. Soller
Dan Sorak
Solace Kirkland Southwick
Cindy Sparkman
William E. Spear
Mr. & Mrs. Don H. Speck
Estelle Spector
Olive H. Spitzmiller
Natalie Stackable
Kay Staley
Dianne F. Stanford
Barbara Ellis Stanley
Verita & Frank J. Stansfield
Patty & Gentry Steele
Renee Freedman Stern
Roanne Nelson Stern
William F. Stern
Evelyn Stewart
Joy Stewart
Barbara Stone
Joan B. Stough
Janis P. Stout & Loren D. Lutes
Richard G. Stout
Roberta R. Stover
Emmalee Stradley
Joan Strassmann &
David Queller
Karen R. Strupp
Claire Svrcek
Barbara M. Swartz
Elsa Swinbank
Nancy M. Syler
Lois Y. Taber
Dr. & Mrs. Morris Taggart
George Tallichet
Dr. Barbara Taylor
Katheryn Allen Taylor
Lorna Terhune

Leslie Tenaro
Elizabeth J. Tepikian
Robert B. Tesh
Rachel Thompson
Melissa Thomsen
Ann Thornhill
Tas C. Thornhill, Jr.
Lucie Wray Todd
Shirley W. Toomim
Eleanor & Jon Totz
Sandra Traweck
T.K. & Joleeta Treadwell
The Rev. Edward T. Triem
Glo Trigg
Carolyn Truesdell
Anne Tucker
Dianne D. Tucker
Susan Tucker
Jaye Tullai
Halina Turner
Mr. & Mrs. Mark R. Turner
Sharon Ann Tyler
Gretchen Umbeck
Martha & Ray Underwood
Mr. & Mrs. R.C. Updegrove
Nikki R. Van Hightower
Pieter D. Van Wijk
Kathy Varty
Adeline Vasluski
Paris Velardo
Jean L. Verhaar
Dr. Sally W. Vernon
Dr. Robert L. Vick
Mr. & Mrs. Robert Vickers
Eleanor & Richard Viebig
Mr. & Mrs. Richard W. Volk
Janet Vrancken
Ann Wales
Linda S. Walker
Judy Wallace
Elizabeth C. Walter
Rabbi Roy A. Walter
Peggy P. Walters
William E. Walters
Thomas Walzer
Patricia Ward
Bess Wareing
Shirley Warshaw
Beatty G. Watts
Donald D. Weaver
David L. Webster

Ede Ruth Weiner
Nancy Harpster Wells
Dr. Joan M. Weltzien
Sharla R. Wertheimer
Ellen M. Westerfield
Marilyn Westerheid
Ivis & Alan Westheimer
Dr. Peter Weston
Lynn Wheeler
Sara E. White
Beverly Wiemer
Jo Wiginton
El Matha Wilder
Kim Wilk
Williams
Dorothy M. Willis, MD
Helen Wils & Leonard Goldstein
Jane & Lawrence Wilson
Jean Wilson
Joanne Wilson
Theresa H. Wilson
Mr. & Mrs. L. B. Windham, Jr.
Melinda K. Winn
Rita & Bernard Wise
Dr. & Mrs. Grant R. Wolfe
Cyvia Wolff
Dr. & Mrs. Edwin C. Wood
Wendy Wood & Steve Ortmann
Valerie & David Woodcock
Christie Woodfin
Lori Workin
Lou Anne & Michael Workman
Mr. & Mrs. Marvin Woskow
Ann E. Wright
Nettie M. Wright
Lorraine Wulfe
Betty Yancey
Suzy Young
Katherine & Mark Yzaguirre
The Zahavi Fund
Georgiana H. Zustovich
Marilyn & Henry Zwirek

HOUSTON AND SOUTHEAST TEXAS CLINIC DIRECTORS AND LOCATIONS

Bryan/College Station
Dyann Santos

Dickinson
Glenda Ridens

Fannin
Sandra Smolensky

FM 1960
Patty Richardson

Greenspoint
Jo Gayle Wilkinson

Huntsville
Dyann Santos

Lufkin
Diana Wheeler

Rosenberg
Valerie Lindley

Southwest
Gilma DeLeon

Stafford
Valerie Lindley

Surgical Services
Kitty Kahn

Administrative Offices

3601 Fannin
Houston, TX 77004
713.522.6240

Bryan/College Station

4112 E. 29th St.
Bryan, TX 77802

Dickinson

3315 I-45 South
Dickinson, TX 77539

Fannin

3601 Fannin
Houston, TX 77004

FM 1960

3995 FM 1960 W.
Houston, TX 77068

Greenspoint

11834 Airline Dr.
Houston, TX 77037

Huntsville

2405 Avenue I, Suite C
Huntsville, TX 77340

Lufkin

1404 Frank St.
Lufkin, TX 75904

Rosenberg

4203 Avenue H, #7
Rosenberg, TX 77471

Southwest

6121 Hillcroft, Suite O
Houston, TX 77081

Stafford

3727 Greenbriar, Suite 118
Stafford, TX 77477

Surgical Services

3601 Fannin
Houston, TX 77004

Call 1.800.230.PLAN for the clinic location nearest you.

2000 - 2001 BOARD OF DIRECTORS

Chair:
The Rev. W. Stewart MacColl

Vice Chair:
Elena M. Marks

Treasurer:
Peggy Heaton

Secretary:
Allison E. Bell

Steve Allen, M.D.
Janice M. Beal, Ed.D.
Christina A. Bryan
Sandy Colt
John Michael Gonzalez
Jan Greer
Sandy Neil Havens
Paula W. Hinton
Dana Hurt
Asha Seth Kapadia, Ph.D.
Nancy D. McGregor
Ginni Mithoff
Harvin C. Moore IV

Sallie Morian
Muffie Moroney
Rufi Natarajan
Elizabeth A. Pannill
Collyn A. Peddie
Olga Soliz
Paul R. Tetreault
Eleanor Tinsley
Thanh Giang Trinh
Chaja Vermeer
Susan B. Young

SENIOR STAFF

President and CEO
Peter J. Durkin

Medical Director
Paul Fine, M.D.

Senior Vice President of Medical Services
Melaney A. Linton

Senior Vice President of Community Services
Rebecca L. White

Vice President of Education
Meryl Cohen

Vice President of Administrative Services
Fawaz Elsaleh

Vice President of Development
Cynthia Grant

Vice President of Medical Services
Laurie McGill

Controller, Vice President of Finance
Kim Pedigo

Vice President of Communications and Marketing
Cris Perez

Vice President of Board Affairs
Jane Rae

Vice President of Medical Services
Bonnie Smith

Director of Education
Yolanda Alvarado

Director of Human Resources
Joe Bondzio

Grassroots Advocacy Director
Cindy Gibson

Director of Volunteer Services
Sylvia LeBlanc

Director of Information Technology
Elaine Mars

Research Director
Nancy Meyers

Associate Director of Development
Natalie Vuckovic

In Memorial

Susan Clayton McAshan

1905 - 2001

Our affiliate lost a treasured supporter on June 10, 2001 with the death of Susan C. McAshan. She was dear to many and will be missed by all who knew her.

The lifetime of philanthropy that was personified by Susan C. McAshan may be one of the best kept secrets in Houston. The late Susan McAshan provided a half century of financial and philosophical dedication to the needs of minorities, the poor, the young and the vulnerable through her personal generosity and through the McAshan Educational and Charitable Trust (later The McAshan Foundation).

This modest, self-effacing but powerful woman showed complete lack of interest in any personal recognition, one of the reasons that so little documentation exists of her philanthropic generosity. However, her unwavering generosity turned countless dreams of broader education, better health care, cultural and environmental enrichment and human equality into reality. As the ripples of a single stone cast into a pond

create ever-widening circles of influence, her largesse affected the lives of countless people.

Susan McAshan learned the lessons of altruism at her mother's knee, absorbing Susan Vaughan Clayton's commitment to causes of equality and education for the poor and minorities, and issues of human rights and human suffering. In the 1920s and '30s, her father, Will Clayton, Undersecretary of State for Economic Affairs, spent endless hours discussing the impending population crisis, foretelling the staggering problems that would follow in its wake. This was the beginning of her lifelong concern for the teeming masses of unwanted, uncared for children she encountered during her World War II time in Brazil and later trips to South America. In a plaza in Bahia, Brazil, she witnessed throngs of pregnant teenage girls with one or two babies already clinging to them, begging in the streets and sleeping in the doorways of lavish cathedrals that lined the square. These extremes of privation and the suffering of impoverished women and children

were powerful motivators for her life-long support of family planning and a woman's right to control her fertility, both locally through Planned Parenthood of Houston and internationally through Family Planning International Assistance.

Following in Susan Clayton's footsteps, one of the original 1936 founders of our Houston affiliate, Susan McAshan insisted that no woman should ever be turned away for inability to pay for these services. She was PPHSET's angel since the early 1960s, helping the fledgling organization keep its doors open. When there was danger of not meeting payroll, Mrs. McAshan opened her heart and her checkbook to ensure that the staff who served the reproductive needs of poor women of Houston would receive their pay. She single-handedly kept the affiliate solvent during the hard times, then underwrote special projects, additional services and clinic expansion as the agency stabilized and grew. She made it possible for PPHSET to be here today.

